

### special services

Same-day service is available at an additional cost for emergency specimens, such as temporal artery biopsies. Please call the Eye Pathology Lab at (608) 263-1474 in advance. Photomicrograph and video transfer services are available upon request at an additional cost. Examination of animal tissue and large scale processing for experimental studies are available at discounted rates.

### billing

After a pathology report is completed for your specimen, two invoices will be generated. An invoice for the technical component will be issued by the University of Wisconsin Hospital and Clinics and another for the professional fee will be issued by the UW Medical Foundation. A fee schedule is enclosed for your information.

We will send invoices directly to the patient's insurance company or to your institution, depending on your preference. If you choose to have invoices sent directly to your patients or their insurance companies, please let patients know that they will be receiving bills from our institution.

If you have any questions regarding your invoice, please contact the billing contact person listed on your invoice.

### sending a specimen

Prepaid specimen shipment kits are available by calling (608) 263-1474. Each prepaid specimen kit includes: specimen jar, tissue examination request form, billing information form, prepaid FedEx air bill and FedEx diagnostic pack.

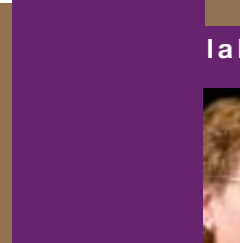
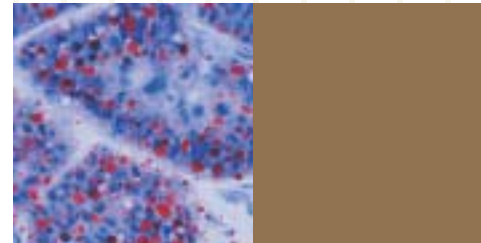
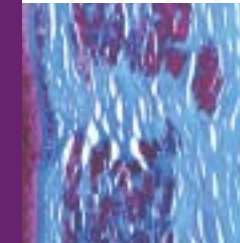


### for more information

To receive a lab introductory kit or to receive more information about pathology services at the University of Wisconsin, please fill out and send in the enclosed postcard.

For other inquiries contact:  
Christine Damico  
Laboratory Manager  
UW Eye Pathology Lab  
600 Highland Avenue, F4/384 CSC  
Box 3220  
Madison, WI 53792-3284

(608) 263-9860  
FAX: (608) 263-1466  
cmdamico@wisc.edu



eye

pathology

laboratories



DEPARTMENT OF  
OPHTHALMOLOGY AND VISUAL SCIENCES  
University of Wisconsin-Madison

## uw eye pathology laboratory

### eye pathology laboratory



The Eye Pathology Laboratory at the University of Wisconsin Department of Ophthalmology and Visual Sciences provides examinations and diagnosis of human tissue from the eye and adnexa by internationally recognized eye pathologists. Located in the Clinical Sciences Center at UW Hospital and Clinics in Madison, Wis., the UW Eye Pathology Laboratory is a regional center and one of the few dedicated eye pathology laboratories in the nation.

### credentials

Established in 1925 by Frederick Allison Davis, MD, the UW Eye Pathology Laboratory is CLIA (Clinical Lab Information Act of 1988) certified and offers the expertise of experienced, fellowship-trained ophthalmic pathologists. Access to a full range of pathology services, combined with high quality expertise and outstanding service, makes the UW Eye Pathology Laboratory a quality choice for practicing ophthalmologists throughout the world.

### services

- Paraffin-embedding with standard hematoxylin-eosin (H&E) and PAS staining of whole eyes, ocular tissues, lid lesions, exenterations and eviscerations. Temporal artery biopsies are processed as a one-day procedure at an extra cost.
- Special stains, such as gram (Brown & Brenn), GMS (Grocott's Methanamine Silver), Masson's Trichrome, Congo Red, etc.

### Immunohistochemical staining, cytology, electron microscopy and cryosectioning.

- Consultation services on referred slide preparations from other institutions.
- Gross photography, photomicrographs, digital imaging and teleconferencing.

Through consultation with the ophthalmology research unit and surgical pathology, the UW Eye Pathology Laboratory has capabilities in several molecular genetic techniques:

- Southern Blot
- Northern Blot
- Chip Arrays
- Fluorescence In Situ Hybridization (FISH)
- Polymerase Chain Reaction

Each lab that sends tissue for processing receives a representative H&E slide with a copy of the pathology report. Each surgeon or referring physician will receive a faxed copy of the report as well as a mailed copy.



"From routine H&E histopathology to special stains for microorganisms and immunohistopathology, Dr. Albert's lab is prepared to provide a broad range of services with a fast turnaround time and easy access to fellows and faculty. Dr. Albert's laboratory truly exemplifies a world-class operation."

David L. McCartney, MD  
Texas Tech University Health  
Sciences Center, Texas

"I enjoy the attention to detail and the clarification of disease process that the University of Wisconsin Eye Pathology Laboratory brings to my cases. The prompt return of an accurate pathologic diagnosis has helped on many cases where the clinical diagnosis was not obvious. The staff at UW Eye Pathology Lab is always willing to take the time to personally discuss cases. Their knowledge of clinical ophthalmology maximizes the usefulness of obtaining pathology consultation for my diagnostic dilemmas."

David R. Hardten, MD  
Phillips Eye Institute, Minnesota

## uw eye pathology laboratory

### For Ophthalmologists with Human Tissue



#### Daniel M. Albert, MD, MS

*Frederick Allison Davis and Lorenz E. Zimmerman Professor, Department of Ophthalmology and Visual Sciences; Professor, Pathology and Laboratory Medicine, Director, UW Eye Pathology Laboratory*

Dr. Albert received his medical degree from the University of Pennsylvania in 1962 and also finished his residency in ophthalmology there in 1966. He completed a fellowship at NIH in 1968 with Drs. Ludwig von Sallmann and Alan Rabson and a fellowship in ophthalmic pathology with Dr. Lorenz Zimmerman at the Armed Forces Institute of Pathology, Washington, DC, in 1969.

His academic career includes faculty positions at Yale and Harvard Medical Schools from 1970-1992. In 1979, he became director of the David G. Cogan Eye Pathology Laboratory at the Massachusetts Eye and Ear Infirmary. He moved to Madison in 1992. Dr. Albert is presently Chair Emeritus of the Department of Ophthalmology and Visual Sciences and director of the UW Eye Pathology Laboratory.

His research interests include studies of the pathogenesis and treatment of retinoblastoma, uveal melanoma and comparative ophthalmic pathology.



#### T. Michael Nork, MD, MS

*Associate Professor of Ophthalmology; Participant, UW Eye Pathology Laboratory*

After receiving an MS in nuclear engineering from the Georgia Institute of Technology in 1972 and an MD from the University of Texas Medical School at San Antonio in 1980, Dr. Nork completed an internship in internal medicine at the Sinai Hospital of Baltimore. He then finished a residency in ophthalmology at the Texas Tech University Health Sciences Center. To gain additional experience in laboratory bench work, he subsequently spent a year as a fellow in ophthalmic pathology under the mentorship of Dr. Mark Tso at the University of Illinois Eye and Ear Infirmary. His formal training was completed with a fellowship in diseases and surgery of the retina at the University of Wisconsin Medical School.

Dr. Nork was appointed to the faculty of the West Virginia University School of

Medicine in the Department of Ophthalmology and Visual Sciences in 1987. In addition to maintaining a busy clinical practice, he also pursued his research interests, one of which involved the retinal mechanisms underlying acquired color vision loss, and, in 1990, he was awarded a five-year R01 grant from the NIH to continue these studies.

He accepted a position at the University of Wisconsin Medical School in the Department of Ophthalmology and Visual Sciences in 1992 and was promoted to Associate Professor with tenure in 1995. Being at the University of Wisconsin, one of the world's leading biomedical research institutions, has given Dr. Nork the opportunity to collaborate with numerous other investigators from various disciplines—an essential element of the type of translational research that interests him.

#### laboratory staff

The Eye Pathology Laboratory is supervised by Dr. Albert's laboratory manager and staffed with ASCP-certified histotechnologists. These histotechnologists are experts in processing, embedding and cutting

of human and animal ocular specimens, adnexal tissues and oculoplastics.

#### ophthalmic pathology fellows

The UW Department of Ophthalmology and Visual Sciences provides one ophthalmic pathology fellowship per year, in which graduating residents may elect to join us full time and train under Dr. Albert. Fellows participate in daily slide readout, provide gross examination of specimens and carry out research in clinical and experimental eye pathology.

#### education

Residents rotate through the UW Eye Pathology Laboratory, and specimens serve as teaching materials for residents and fellows. Histotechnologists from other institutions have been trained by UW senior histotechnologists. Teleconferencing facilities are available for CME conferences and other educational presentations.

## comparative ophthalmic research laboratory (CORL) For Veterinarians and Industry

Daniel Albert, MD, and Richard Dubielzig, DVM, are members of Comparative Ophthalmic Research Laboratories (CORL), a collaborative team of internationally recognized vision scientists providing world class vision research for industry. The CORL team brings together the scientific resources of physician and veterinary ophthalmologists and pathologists, as well as basic

scientists encompassing molecular biology, cell biology, pharmacology and electrophysiology to provide a unique "top to bottom" service with a goal of helping industry find research solutions in vision science. Clinical trials are developed for both human and veterinary markets.



#### Richard R. Dubielzig, DVM

*Professor of Pathology, School of Veterinary Medicine*

*Director, Comparative Ocular Pathology Laboratory of Wisconsin*

*School of Veterinary Medicine  
2015 S. Linden Drive  
Madison, WI 53706*

*dubielzr@svm.vetmed.wisc.edu  
(608) 263-9805*

Dr. Dubielzig has made ocular pathology an area of special interest and runs a nationwide pathology service for veterinary ophthalmologists that currently receives more than 1,500 specimens per year. Please contact Dr. Dubielzig for specimen submissions and a price list.

Dr. Dubielzig is author of 144 research papers and 171 published abstracts with an emphasis in ocular pathology. He holds semi-weekly rounds which are attended by vision scientists from the Medical Schools. Dr. Dubielzig collaborates with members of the UW Eye Pathology Laboratory to investigate ocular problems in animal models and to facilitate corporate studies for safety evaluation and research and development. Dr. Dubielzig received his veterinary degree from the University of Minnesota in 1972 and completed his residency training in anatomic pathology at the University of Pennsylvania in 1977.

He returned to Madison, his hometown, to join the new Veterinary School as a charter faculty member in the Department of Pathobiological Sciences in 1983.

#### Comparative Ocular Pathology Fellowship at the Veterinary School

This one-year program is designed to provide ocular pathology training and an introduction to broader vision science to veterinarians who are interested in specialty training in ophthalmology or pathology. The fellows participate in the daily activities of the Comparative Ocular Pathology Laboratory of Wisconsin at the School of Veterinary Medicine and attend daily readouts at the Eye Pathology Laboratory. These trainees have access to a large teaching and research collection and are expected to work up cases or case series for publication.



*Front: Richard R. Dubielzig, DVM, Director, Comparative Ocular Pathology Laboratory of Wisconsin; Daniel M. Albert, MD, MS, Director, UW Eye Pathology Laboratory*

*Standing: Chris Rielly, Comparative Ocular Pathology fellow; Kate Lieber, Comparative Ocular Pathology Laboratory manager; Vicky Rogness, UW Eye Pathology senior histotechnologist; Emily Datta, Comparative Ocular Pathology Laboratory clerk; Elizabeth Koenig, Assistant Administrator-Marketing, UW Department of Ophthalmology and Visual Sciences; Christine Damico, UW Eye Pathology Laboratory manager; Janice Lokken, UW Eye Pathology senior histotechnologist*

*Standing: Chris Rielly, Comparative Ocular Pathology fellow; Kate Lieber, Comparative Ocular Pathology Laboratory manager; Vicky Rogness, UW Eye Pathology senior histotechnologist; Emily Datta, Comparative Ocular Pathology Laboratory clerk; Elizabeth Koenig, Assistant Administrator-Marketing, UW Department of Ophthalmology and Visual Sciences; Christine Damico, UW Eye Pathology Laboratory manager; Janice Lokken, UW Eye Pathology senior histotechnologist*

*Standing: Chris Rielly, Comparative Ocular Pathology fellow; Kate Lieber, Comparative Ocular Pathology Laboratory manager; Vicky Rogness, UW Eye Pathology senior histotechnologist; Emily Datta, Comparative Ocular Pathology Laboratory clerk; Elizabeth Koenig, Assistant Administrator-Marketing, UW Department of Ophthalmology and Visual Sciences; Christine Damico, UW Eye Pathology Laboratory manager; Janice Lokken, UW Eye Pathology senior histotechnologist*

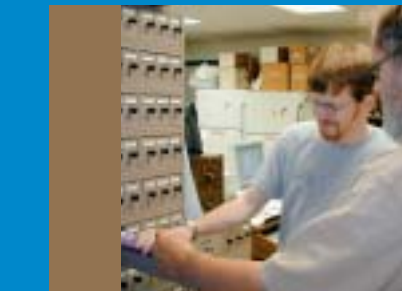
*Standing: Chris Rielly, Comparative Ocular Pathology fellow; Kate Lieber, Comparative Ocular Pathology Laboratory manager; Vicky Rogness, UW Eye Pathology senior histotechnologist; Emily Datta, Comparative Ocular Pathology Laboratory clerk; Elizabeth Koenig, Assistant Administrator-Marketing, UW Department of Ophthalmology and Visual Sciences; Christine Damico, UW Eye Pathology Laboratory manager; Janice Lokken, UW Eye Pathology senior histotechnologist*

*Standing: Chris Rielly, Comparative Ocular Pathology fellow; Kate Lieber, Comparative Ocular Pathology Laboratory manager; Vicky Rogness, UW Eye Pathology senior histotechnologist; Emily Datta, Comparative Ocular Pathology Laboratory clerk; Elizabeth Koenig, Assistant Administrator-Marketing, UW Department of Ophthalmology and Visual Sciences; Christine Damico, UW Eye Pathology Laboratory manager; Janice Lokken, UW Eye Pathology senior histotechnologist*

*Standing: Chris Rielly, Comparative Ocular Pathology fellow; Kate Lieber, Comparative Ocular Pathology Laboratory manager; Vicky Rogness, UW Eye Pathology senior histotechnologist; Emily Datta, Comparative Ocular Pathology Laboratory clerk; Elizabeth Koenig, Assistant Administrator-Marketing, UW Department of Ophthalmology and Visual Sciences; Christine Damico, UW Eye Pathology Laboratory manager; Janice Lokken, UW Eye Pathology senior histotechnologist*

*Standing: Chris Rielly, Comparative Ocular Pathology fellow; Kate Lieber, Comparative Ocular Pathology Laboratory manager; Vicky Rogness, UW Eye Pathology senior histotechnologist; Emily Datta, Comparative Ocular Pathology Laboratory clerk; Elizabeth Koenig, Assistant Administrator-Marketing, UW Department of Ophthalmology and Visual Sciences; Christine Damico, UW Eye Pathology Laboratory manager; Janice Lokken, UW Eye Pathology senior histotechnologist*

*Standing: Chris Rielly, Comparative Ocular Pathology fellow; Kate Lieber, Comparative Ocular Pathology Laboratory manager; Vicky Rogness, UW Eye Pathology senior histotechnologist; Emily Datta, Comparative Ocular Pathology Laboratory clerk; Elizabeth Koenig, Assistant Administrator-Marketing, UW Department of Ophthalmology and Visual Sciences; Christine Damico, UW Eye Pathology Laboratory manager; Janice Lokken, UW Eye Pathology senior histotechnologist*



"Drs. Dan Albert and Dick Dubielzig are the best known and most respected physician and veterinary ocular pathologists practicing today. They provide first-rate diagnostic services in the assessment of spontaneous disease in human and veterinary patients. Additionally, they are an important resource in the assessment of studies performed by the Comparative Ophthalmic Research Laboratories (CORL) for industry."

Christopher Murphy, DVM, PhD  
Diplomate, American College of  
Veterinary Ophthalmologists  
Director, Comparative Ophthalmic  
Research Laboratories (CORL)  
University of Wisconsin-Madison

"Dr. Dubielzig was an excellent teacher and host during my visits to his Comparative Ocular Pathology Laboratory in Madison, Wis., where I learned a great deal about comparative ocular anatomy and pathology. Thanks to Dr. Dubielzig and his team, I now consider ocular pathology to be one of my great passions."

Denise Moore,  
MA.VetMB.CertVOphthal.MRCVS.VN  
Staff Clinician in Ophthalmology,  
Royal Veterinary College, London, UK